

SCORREVOLI E SALISCENDI - SLIDING AND UP-DOWN

Verticale - Vertical

Dati Tecnici

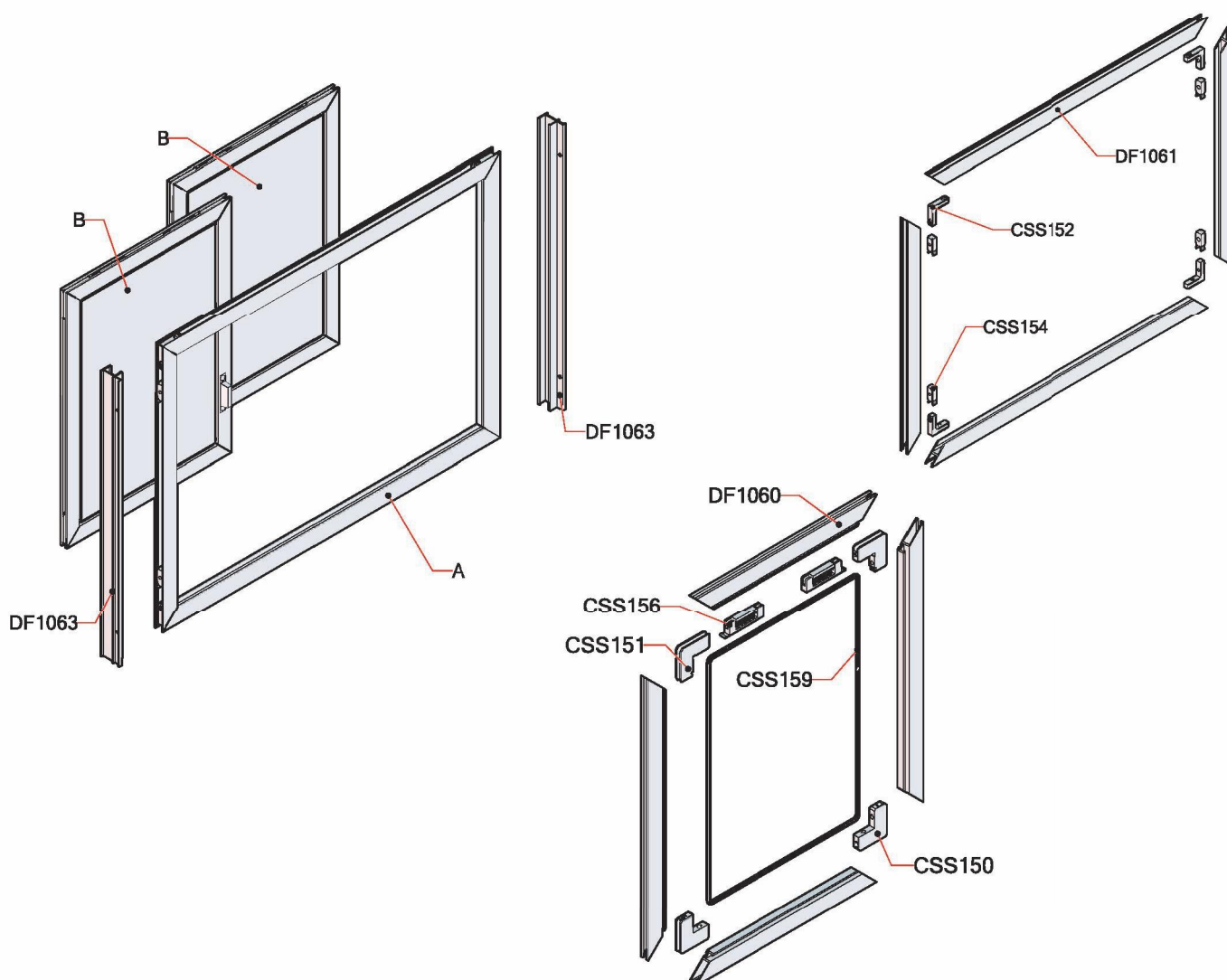
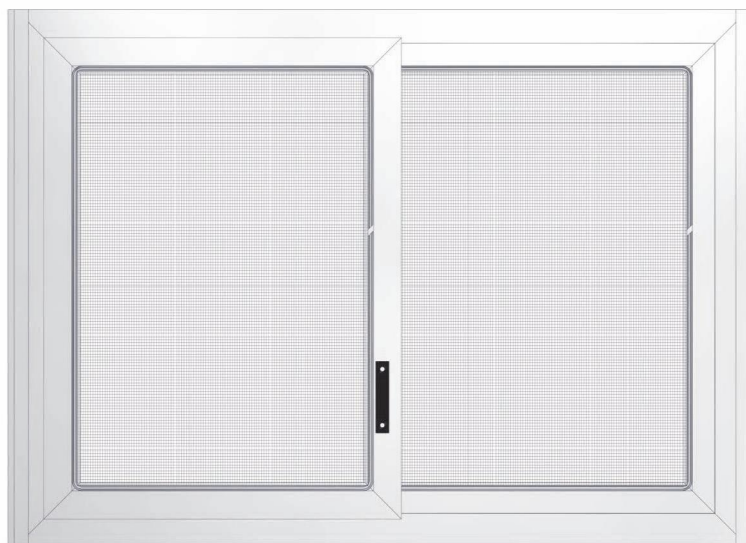
Altezza massima: 2.200 [mm]

Larghezza massima: 800 [mm]

Data Sheet

Maximum height: 2.200 [mm]

Maximum width: 800 [mm]

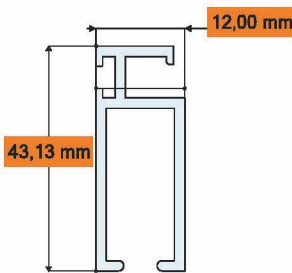


SCORREVOLI E SALISCENDI - SLIDING AND UP-DOWN

Verticale - Vertical

Profili di alluminio specifici - Specific aluminium profiles

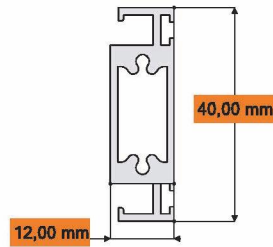
Scorrevole - Sliding Frame



Dati Tecnici
 Codice: DF1060
 Materiale: EN-AW 6060 T5
 Peso nominale: 300 g/mt
 Finitura: Grezzo - Verniciatura

Data Sheet
 Code: DF1060
 Material: EN-AW 6060 T5
 Nominal weight: 300 g/mt
 Finishing: Raw - Painting

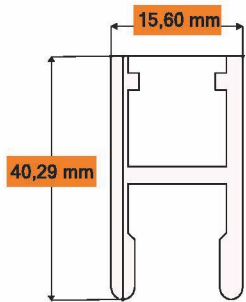
Fascetta centrale - Central frame



Dati Tecnici
 Codice: DF1062
 Materiale: EN-AW 6060 T5
 Peso nominale: 500 g/mt
 Finitura: Grezzo - Verniciatura

Data Sheet
 Code: DF1062
 Material: EN-AW 6060 T5
 Nominal weight: 500 g/mt
 Finishing: Raw - Painting

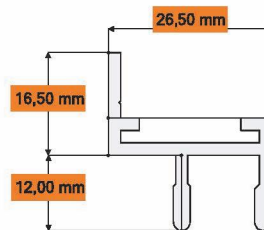
Telaio - Frame



Dati Tecnici
 Codice: DF1061
 Materiale: EN-AW 6060 T5
 Peso nominale: 355 g/mt
 Finitura: Grezzo - Verniciatura

Data Sheet
 Code: DF1061
 Material: EN-AW 6060 T5
 Nominal weight: 355 g/mt
 Finishing: Raw - Painting

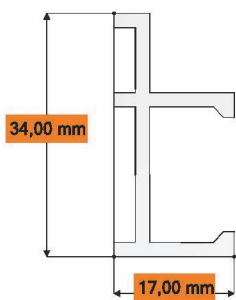
Telaio con riscontro - Frame with leaf



Dati Tecnici
 Codice: DF1064
 Materiale: EN-AW 6060 T5
 Peso nominale: 450 g/mt
 Finitura: Grezzo - Verniciatura

Data Sheet
 Code: DF1064
 Material: EN-AW 6060 T5
 Nominal weight: 450 g/mt
 Finishing: Raw - Painting

Riscontro - Leaf



Dati Tecnici
 Codice: DF1063
 Materiale: EN-AW 6060 T5
 Peso nominale: 280 g/mt
 Finitura: Grezzo - Verniciatura

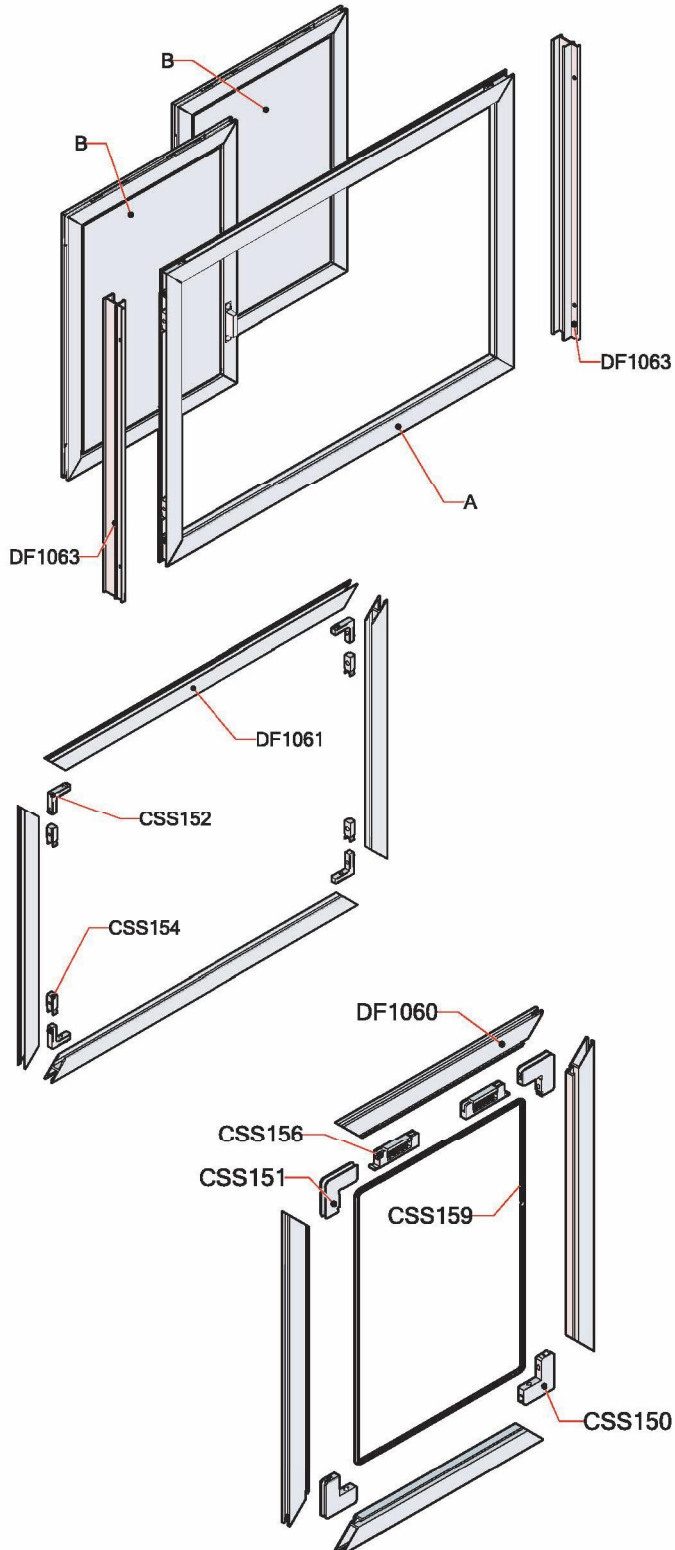
Data Sheet
 Code: DF1063
 Material: EN-AW 6060 T5
 Nominal weight: 280 g/mt
 Finishing: Raw - Painting

SCORREVOLI E SALISCENDI - SLIDING AND UP-DOWN

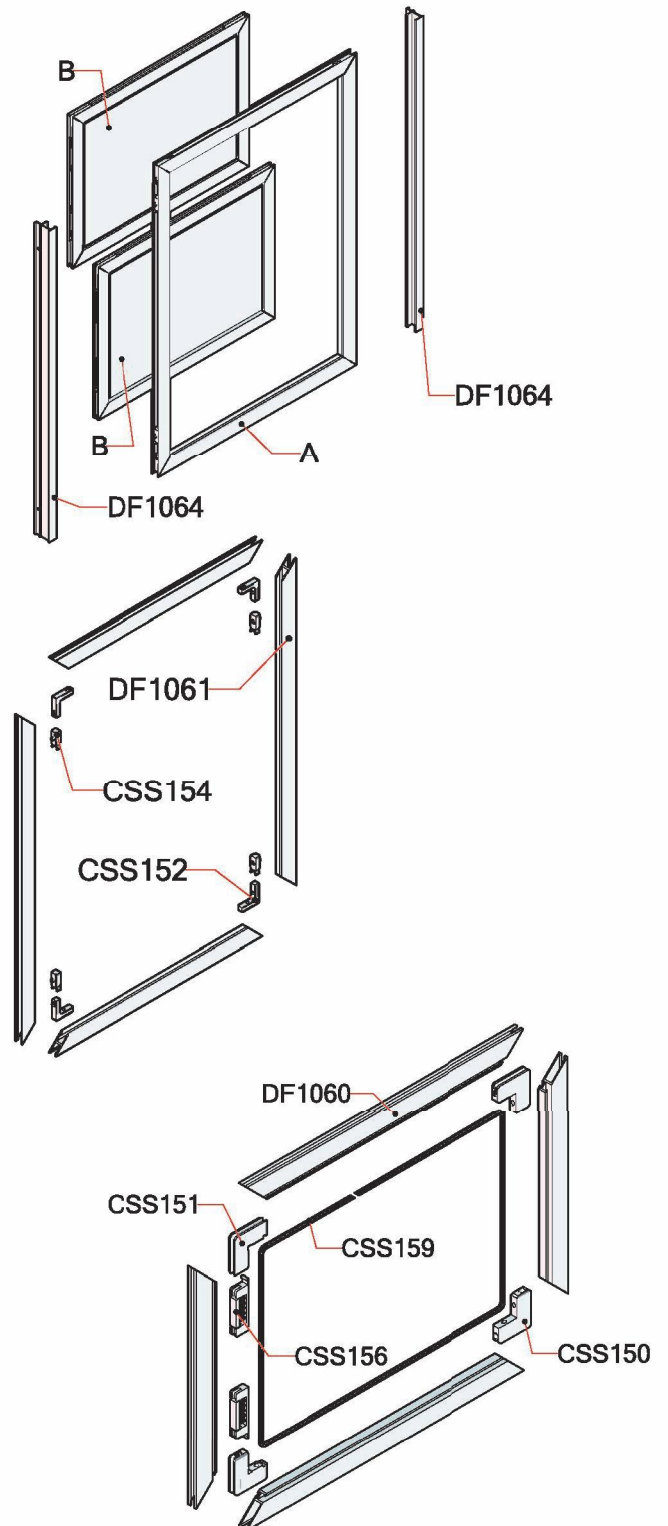
Verticale - Vertical

Versioni realizzabili - Possible solutions

Versione scorrevole - Sliding version



Versione saliscendi - UpDown version

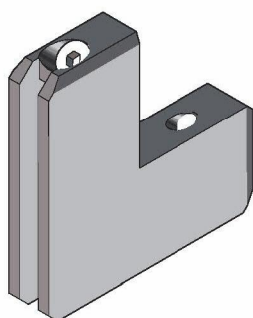


SCORREVOLI E SALISCENDI - SLIDING AND UP-DOWN

Verticale - Vertical

Accessori base - Basic accessories

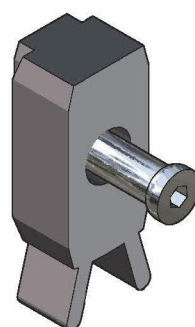
Squadretta anta simmetrica - Square for wing



Dati Tecnici
 Codice: CSS150
 Angolo di taglio: 45°
 Materiale: PA6
 Confezione: 100 pezzi (min)

Data Sheet
 Code: CSS150
 Cutting angle: 45°
 Material: PA6
 Packing: 100 pieces (min)

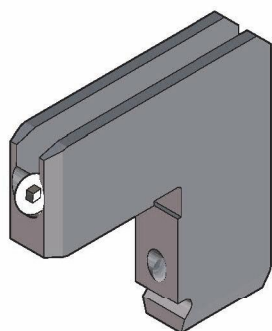
Regolo compensatore - Adjuster



Dati Tecnici
 Codice: CSS154
 Materiale: PA6
 Confezione: 100 pezzi (min)

Data Sheet
 Code: CSS154
 Material: PA6
 Packing: 100 pieces (min)

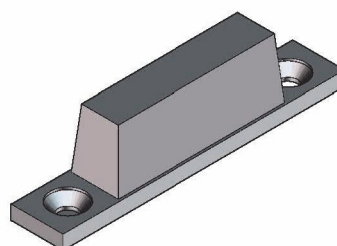
Squadretta anta asimmetrica - Square for wing



Dati Tecnici
 Codice: CSS151
 Per fissaggio: CSS156
 Angolo di taglio: 45°
 Materiale: PA6
 Confezione: 100 pezzi (min)

Data Sheet
 Code: CSS151
 For fixing: CSS156
 Cutting angle: 45°
 Material: PA6
 Packing: 100 pieces (min)

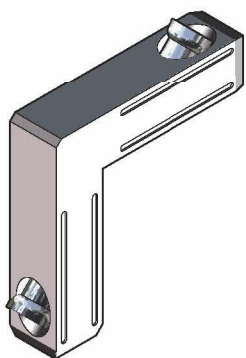
Maniglietta - Handle



Dati Tecnici
 Codice: CSS155
 Materiale: PA6
 Confezione: 100 pezzi (min)

Data Sheet
 Code: CSS155
 Material: PA6
 Packing: 100 pieces (min)

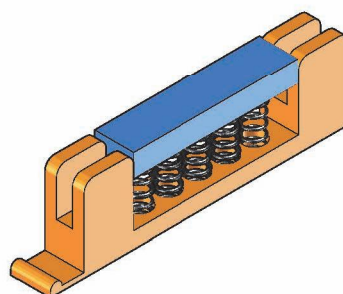
Squadretta telaio - Square for frame



Dati Tecnici
 Codice: CSS152
 Angolo di taglio: 45°
 Materiale: PA6
 Confezione: 100 pezzi (min)

Data Sheet
 Code: CSS152
 Cutting angle: 45°
 Material: PA6
 Packing: 100 pieces (min)

Frizione di movimento - Clutch motion



Dati Tecnici
 Codice: CSS156
 Predisposizione: Scorrevoli-Saliscendi
 Materiale: PA6
 Confezione: 100 pezzi (min)

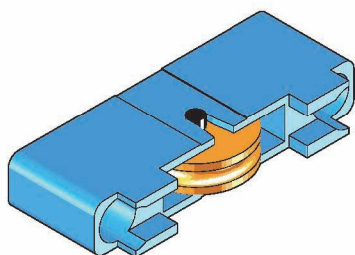
Data Sheet
 Code: CSS156
 Predisposition: Sliding-UpDown
 Material: PA6
 Packing: 100 pieces (min)

SCORREVOLI E SALISCENDI - SLIDING AND UP-DOWN

Verticale - Vertical

Accessori base - Basic accessories

Carrello per scorrevoli - Skid for sliding



Dati Tecnici

Codice: **CSS158**
 Predisposizione: Scorrevoli
 Materiale: PA6
 Confezione: 100 pezzi (min)

Data Sheet

Code: **CSS158**
 Predisposition: Sliding
 Material: PA6
 Packing: 100 pieces (min)

Tondino morbido rigato - Soft rod striped



Dati Tecnici

Codice: **CSS159**
 Diametro: Ø 5,0 [mm]
 Materiale: PVC
 Confezione: 1 bobina (min)
 25 [Kg]
 700 [mt]
Dati indicativi

Data Sheet

Code: **CSS159**
 Diameter: Ø 5,0 [mm]
 Material: PVC
 Packing: 1 coil (min)
 25 [Kg]
 700 [mt]
Indicative data

Rotella inserimento rete - Roller insertion net



Dati Tecnici

Codice: **CTF160**
 Materiale: PA6
 Confezione: 2 pezzi (min)

Data Sheet

Code: **CTF160**
 Material: PA6
 Packing: 2 pieces (min)